

**NEW**

## Pressure Brake Bleeder System

# Greater Capacity and Broader Applications Make Brake Jobs Easier



12 FT LONG HOSE FOR ACCESS  
ATTACHED TO PULLING POLE FOR  
CONVENIENT STORAGE

AUTOMATIC FLUID SHUT-OFF

4 GALLON CAPACITY TANK

NEW INDUSTRY-STANDARD  
100 SERIES DISCONNECT

WHEELS INSTEAD OF FEET  
MEAN GREATER MOBILITY  
WHEN TANK IS FULL

**BRAKE BLEEDER TANK - 3795**

KD Tools introduces our new upgraded pressure brake bleeder system. In keeping with our tradition of innovation, we now offer a greater capacity system plus expanded application adapters conforming to industry quick-disconnect standards. The tank capacity has been more than doubled from 7 quarts to 4 gallons. Casters and a pole are now standard ensuring this higher capacity tank is still highly portable and can be moved around the shop with ease. The longer 12 foot hose improves access to master cylinders of large trucks or into limited access applications.

Detailed on the back of this flyer is the new line of master cylinder adapters designed to provide the broadest coverage on the market. A key improvement is the quick disconnect style which, in keeping with industry standards, has been upgraded from the 100 to the 2100 series style. However if you already own the classic KD2222 brake bleeder tank or any of the KD master cylinder adapters designed for use with it, the new 37951 and 37952 quick disconnect conversion couplers allow you to easily adapt them for use with this new system. At KD Tools customers talk and we listen. That's KD.



## MASTER CYLINDER ADAPTERS

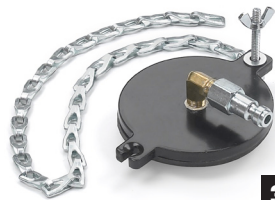
KD's master cylinder adapters pressurize brake systems on many applications across numerous makes. These adapters can be used with 3795 and 2901 brake bleeding tanks.



**3787**

### Dual Bleeding Attachment

Use for pressurizing brake systems when bleeding dual round top reservoirs. Features quick disconnect fittings for fast setup. Works on GM Vans and Dodge Trucks.



**3788**

### Universal Adapter - 3.25\"/>

Use with 3-1/4\"/>



**3789**

### Universal Adapter - 3.75\"/>

Use with rectangular reservoirs under 3.75\"/>



**3790**

### Universal Round Adapter - 4-1/8\"/>

Use with 4-1/8\"/>



**3796**

### GM Bypass Adapter

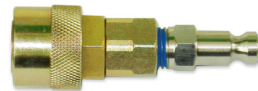
Works on most GM applications, including full-sized cars and trucks.



**37951**

### Brake Bleeder Adapter - 100 Series to 2100 Series

Converts classic 2222 and classic 2901 brake bleeder tank to new 37XX series master cylinder adapters.



**37952**

### Brake Bleeder Adapter - 2100 Series to 100 Series

Converts new 3795 and new 2901 brake bleeder tank to classic KD master cylinder adapters.

Obsolete Part #	Superseded by	Key Features
2222 Brake Bleeder Tank	3795 Brake Bleeder Tank	4 gallon capacity, with wheels and hand post for mobility, disconnect changed to industry standard
2901 Brake Bleeder Tank	2901 Brake Bleeder Tank	Uses new industry standard disconnect - all else the same
3353 Brake Bleeder Adapter	3796 Brake Bleeder Adapter	GM Full-sized cars and trucks
2417 Brake Bleeder Adapter	3789 Brake Bleeder Adapter	Ford Full-sized cars and trucks
3297 Brake Bleeder Adapter	3788 Brake Bleeder Adapter	Domestic and Import Applications
3354 Brake Bleeder Adapter	3787 Brake Bleeder Adapter	GM Vans and Dodge Trucks
New Application	3790 Brake Bleeder Adapter	Many Import Applications
New Application	37951 Brake Bleeder Adapter - 100 Series to 2100 series	Converts classic 2222 brake bleeder tank to new 37XX series master cylinder adapters
New Application	37952 Brake Bleeder Adapter - 2100 Series to 100 series	Converts new 3795 brake bleeder tank to classic KD master cylinder adapters
3294 Brake Bleeder Adapter	No Replacement	
2216 Brake Bleeder Adapter	No Replacement	